

ATTENTION DRIVERS!

Please be advised of the following road cautions during:

Aug. 18th-22nd , 2025



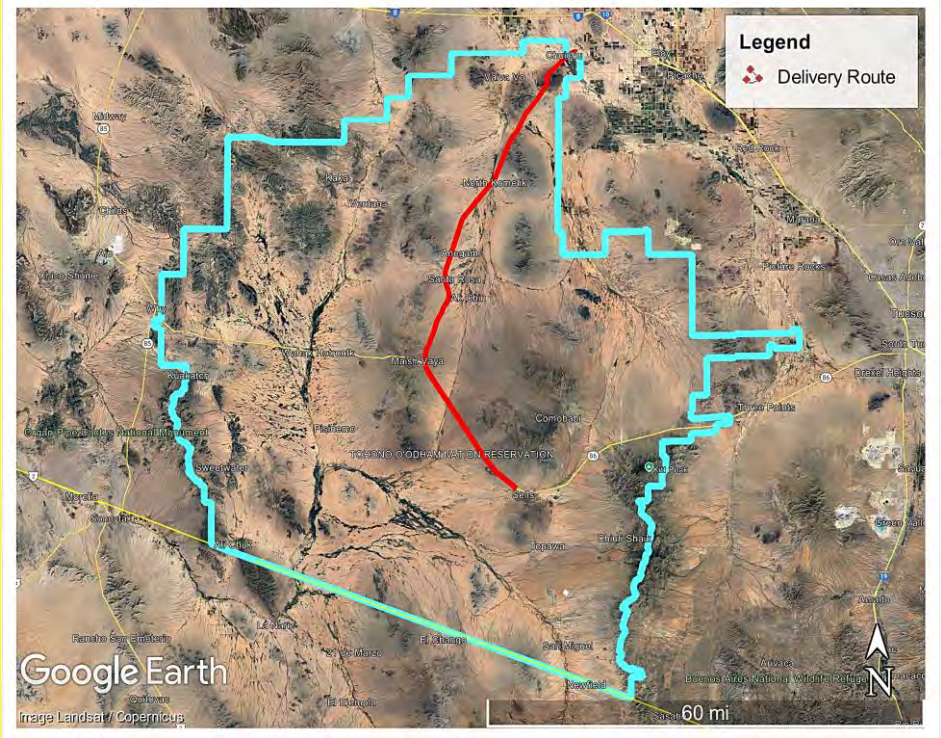
Potential traffic delays due to the delivery of sections for the TON Planning & Economic Development Department Building.

Delivery Route: Southbound on IR 15



Route

Staging Location



Please plan your trip accordingly and drive safely.



Questions, please contact the Planning & Economic Development Department (520)383-5546