

**Tohono O'odham Nation**

86<sup>th</sup> Annual O'odham Wapkial Ha-Tas Rodeo & Fair

"Celebrating Our O'odham Superheroes"

**Saturday, February 1, 2025, at 9:00am**

**2025 PARADE ENTRY REGISTRATION**

**Application DEADLINE\* IS 5:00 P.M., MONDAY, JANUARY 27, 2025**

**\*Late applications will check in and can ride but will not be judged**

**REGISTRATIONS WILL NOT BE ACCEPTED ON THE DAY OF THE PARADE.**

ENTRY NAME: \_\_\_\_\_

ADDRESS: \_\_\_\_\_ CITY: \_\_\_\_\_ STATE/ZIP: \_\_\_\_\_

ENTRY REPRESENTATIVE: \_\_\_\_\_ PHONE: \_\_\_\_\_

EMAIL: \_\_\_\_\_ Preferred Method of Contact? PHONE: ☐ EMAIL: ☐

**ENTRY CATEGORY** (Please check one that best describes your entry):

- ☐ Business (i.e., Bashes', Stores, Restaurants, Shops, etc.)  
☐ Groups (i.e., Car/Motorcycle, Cheer Clubs, Churches, LGBT, Modern, Traditional, Spiritual, etc.)  
☐ Schools (i.e., Clubs, Teams, Bands, Faculty, Staff, etc.)  
☐ Music (Waila Bands, Choirs, Dance Groups, Traditional Dancers/Singers, etc.)  
☐ Tribal Programs (Tribal/District Programs, Elder Centers, Enterprises, Health Care, Livestock, etc.)  
☐ Royalty (all Tribes) Horseback: \_\_\_\_\_ Vehicle: \_\_\_\_\_ Walking: \_\_\_\_\_

**MODE OF TRANSPORTATION:**

- |   |  |   |
|---|--|---|
| <input type="checkbox"/> Marching/Walking/Dancers             | <input type="checkbox"/> Car             | <input type="checkbox"/> Horse-drawn Entry (# of) _____ |
| <input type="checkbox"/> Truck with trailer                   | <input type="checkbox"/> Truck           | <input type="checkbox"/> Horse(s) (# of) _____          |
| <input type="checkbox"/> Vehicles w/ Marchers/Walkers/Dancers | <input type="checkbox"/> Heavy Equipment | <input type="checkbox"/> Supplied by Nation             |

MARCHERS, WALKERS, and DANCERS if you indicated **Vehicle with Marchers/Walkers/Dancers** above, please indicate the number of marchers and/or walkers with your vehicle \_\_\_\_\_.

**LENGTH OF ENTRY (in feet)** \_\_\_\_\_. \*\*Please measure from the front of the float to the end of the float. If more than one vehicle will be in the parade. Measure from first car to last car. \*\*

**WILL THERE BE ANY LOUD MUSIC FROM YOUR ENTRY THAT MAY ALARM HORSES?**

IF YES, PLEASE DESCRIBE: \_\_\_\_\_

HORSE / ANIMAL ENTRIES- - MUST PROVIDE OWN POOPER SCOOPER FOR YOUR ENTRY.

**\*\*Motorized entries must attach copies of vehicle insurance and valid driver's license\*\***

**ENTRY PROFILE** – In 60 words or less, provide a description of your parade entry. Tell us who you are and about your entry. This information will be used by the announcers as your entry passes their respective stations. Please write clearly.

- By submitting the signed Parade Application, I understand I am representing all individuals participating within this parade entry that I/we have read and will adhere to Tohono O'odham Nation, O'odham Wapkial Ha-Tas Rodeo & Fair 2025 Parade Rules and Regulations. I also understand that on Parade Day, each entry must be accompanied by a Group Representative (as identified on the Parade Application) who oversees the entry and responsible for their participants' knowledge of and compliance with these Rules and Regulations. The designated Group Representative must be responsive to Parade Committee official requests.

- My signature includes that I understand the Tohono O'odham Nation Rodeo and Fair approved disclaimer which reads as follows: Persons attending and participating in the Rodeo and Fair assume all risks including, but not limited to illness, injury, death, or property loss and agree not to hold the Tohono O'odham Nation, its agents, event sponsors and volunteers liable.

\_\_\_\_\_  
Entry Representative's Signature

\_\_\_\_\_  
Date

Parade entries can be emailed to [RFParade@tonation-nsn.gov](mailto:RFParade@tonation-nsn.gov) or mailed to Tohono O'odham Department of Education, PO Box 837, Sells, AZ 85634. For any questions, please call 520-383-8650.

In addition, to the applicable laws of the Tohono O'odham Nation, the following parade rules and regulations are added to make the parade an enjoyable event for all participants and spectators.

## **RULES AND REGULATION**

### **➤ GENERAL**

- Our primary focus is the safety of our spectators, entrants, and livestock. THESE RULES APPLY TO ALL ENTRIES. Parade Committee officials reserve the right to remove any entry at any time, whether as a result of safety concerns, interference with the Parade's progress or any other reason that Parade Committee officials deem appropriate.
  - Age Requirements
    - The following requirements must be verified by the Entry's Group Representative, who will ensure compliance:
    - The minimum age requirement for participation in the Tohono O'odham Nation's Parade is 5 years of age or Head Start enrolled children with their Center.
    - The minimum age requirement for children mounted on horseback is 12 years old. Each mounted child must be accompanied by a parent or adult as designated by the parent, who either walks or rides the route with the child.
    - All children mounted on horseback, must wear equestrian protective headgear that meets the American Society for Testing and Materials-Safety Equipment Institute - (ASTM-SEI) safety standards. Bike helmets are not permitted. Protective headgear is recommended for all participants.
    - The Group Representative will ensure adequate adult supervision of all children participating in his/her entry.
- ALL parade entries must proceed with caution when you see an emergency vehicle (Ambulance, Fire, Police, etc.) approaching. Pull over to the far right of the parade route.
- Parade Committee officials reserve the right to determine that any entry is overloaded for the equipment or the livestock. If in the opinion of a PARADE COMMITTEE official a unit appears overloaded, the "Group Representative" of the entry will have the opportunity to rectify the situation before being removed from the route.
  - This is an alcohol & drug free event.
- The ultimate responsibility for safety lies with each individual entry. Entries must comply with all Parade Committee Rules and Regulations and comply with all government regulations and safety codes, manufacturer's recommendations and similar standards. \_\_\_Initial

### **➤ PERSONAL SAFETY**

- Please make sure ALL entry participants are aware of the possibility of weather-related illnesses.
  - All Parade entries are encouraged to bring water or replenishing fluids for participants.
- NO OBJECTS may be thrown into the crowd from any person, vehicles or floats (this includes from the crowd into the street) during the parade for example: coupons, photos, promotional items, fruit, etc. Failure to comply may result in exclusion from participating in future parades. This is for the safety of the public and parade participants.
- Noisemakers of any kind (including loud POPPERS) are not permitted. \_\_\_\_\_Initial

### **➤ VEHICLE**

- ALL motorized vehicles/trailer entries MUST be able to show proof of the operator's driver's license and proof of vehicle insurance to the inspection team, upon request. Entries will be allowed to rectify the situation if unable to provide proof, otherwise the entry will not be accepted or allowed to participate in the parade.
- For safety reasons, drivers of a motorized entry are NOT allowed to distribute any material during the parade, their full attention must be on the parade.
- All vehicle/float entries must be in good working order and ensure vehicle's tank is full of gas. All vehicles must be able to navigate the entire Parade route and make all turns required without difficulty.

- It is recommended for all vehicle/float entries to have a working fire extinguisher on board.
- Float entries shall NOT be higher than 14 feet in height. Floats taller than max height will not be permitted on the parade line up.
  - Jumping on and off vehicles, floats, etc., is strictly prohibited.
- Entry participants are strictly prohibited to sit on the hood or the cab of a vehicle during the parade.
  - No all-terrain vehicles (ATV) in the parade. \_\_\_\_\_Initial

#### ➤ HORSES AND HORSE-DRAWN ENTRIES

- All livestock Parade entries shall exhibit proper disposition and control of all animals in the Parade environment without assistance, including but not limited to, the use of sedatives for horses such as Ace or Be Calm. Failure to comply will result in the removal of the animal from the parade route.
- No participants or guests may load or unload horse-drawn equipment along the Parade route before, during or after the Parade unless directed by a Parade Committee official.
  - All horse-drawn vehicle entries must be in good mechanical condition.
- You MUST have one (1) or more 'pooper scoopers', along with the proper tools, following your group to ensure your riders' horse droppings are picked up along the parade route.
  - All entries must always treat animals humanely. \_\_\_\_\_Initial

#### ➤ LINE-UP

- **Entries not in line at 8:30 AM when check-in closes, will not be allowed to participate. Entries will not be allowed to join the parade along the parade route unless instructed by a parade official.**
  - You shall provide your own float banner(s).
- Parade Entries must place their two parade numbers (given by registration) on the front/left side of their entry, so it is easily visible to the announcers. Failure to display numbers will lead to disqualification from competition of entry being judged.
- Each Parade entry shall carry plastic trash bags for depositing all trash and other litter accumulated by their Parade participants. Gt.-0Trash bins will be provided at the De-Staging area to dispose of trash.
  - ORDER OF PARADE LINE UP:
    - a. Police Escort (Tohono O'odham Police Department)
    - b. Welcome Banner
    - c. Veterans Groups
    - d. Grand Marshall
    - e. Miss O'odham Wapkial Ha tas
    - f. Miss Tohono O'odham Nation
    - g. Tohono O'odham Nation Legislative
    - h. Tohono O'odham Nation Judicial Branch
    - i. Tohono O'odham Nation Executive Office: Chair & Vice-Chair
    - j. Dignitaries \_\_\_\_\_Initial

#### ➤ PARADE PACE

- All entries must be willing and sufficiently physically fit to maintain both the Parade pace and spacing as set by Parade Committee officials, transportation during the parade route is not available. Groups should stay at least (2) car lengths behind the entry ahead.
- To ensure the flow of the parade and to avoid backup, performances are limited to 15 seconds at each announcer's stand and 30 seconds at the judge's table.
- For the safety of spectators and children, parade participants wishing to distribute items may walk along the parade route and hand out items but must keep up with parade pace and not disrupt other participants. Healthy food items only, no candy. \_\_\_\_\_Initial

#### ➤ ROUTE MAP:

1. Parade **check-in** will be at the Management of Health complex starting at 4:30am.
2. All entries MUST stay in their assigned 'set-up' space until notified by Parade Committee official.
3. Parade will begin promptly at 9am. Despite rain, wind or shine.
4. Line up begins at the last house on Big Fields Road.

Route begins on Main Street then turns east continuing down Main Street until the route reaches St. Mary's Church. All riders and walkers will be transported from St. Mary's parking lot area to the De-staging area located at Management of Health complex. Entries must de-stage at

Management of Health complex and will be allotted 45 minutes. \_\_\_\_\_Initial

➤ **ABUSE**

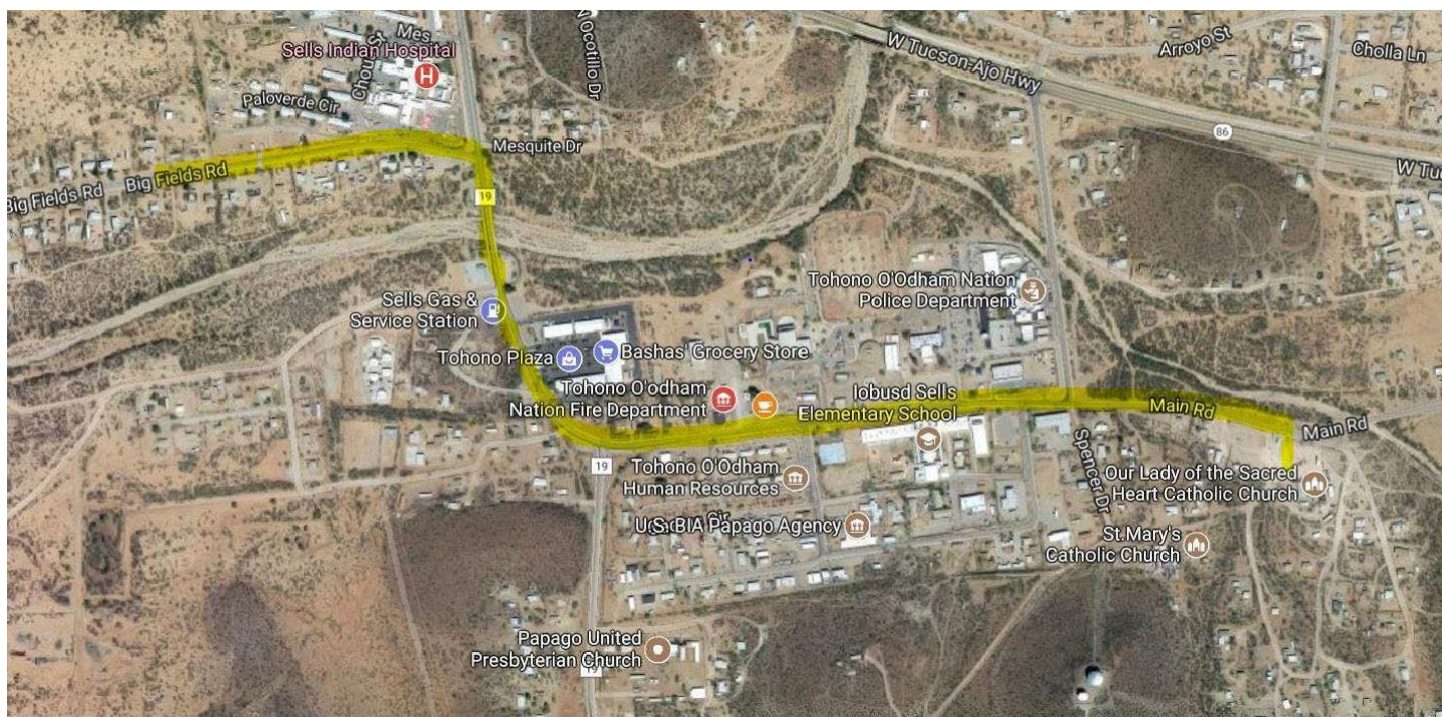
- The O'odham Wapkial Ha-Tas Parade Committee has a ZERO TOLERANCE for animal abuse. Persons abusing animals shall immediately be removed from the route and be reported to the authorities. All livestock shall be in good health and sound condition.
- The O'odham Wapkial Ha-Tas Parade Committee has a ZERO TOLERANCE for those choosing to abuse our volunteers or our entrants. Please promptly report violators to Parade Committee officials on the route or afterwards. \_\_\_\_\_Initial

➤ **RESTRICTIONS**

- The use of alcoholic beverages by participants in any capacity in the O'odham Wapkial Ha-Tas Parade is prohibited.
  - All-terrain vehicles (ATV) will not be allowed to participate in the parade. \_\_\_\_\_Initial

➤ **RULES AND ENFORCEMENT**

- The Parade Rules and Guidelines above are subject to the interpretation of the Parade Committee Member and will be enforced by Parade Workers. \_\_\_\_\_Initial



➤ **Check-In (4:30am-8:30am) and Shuttle**

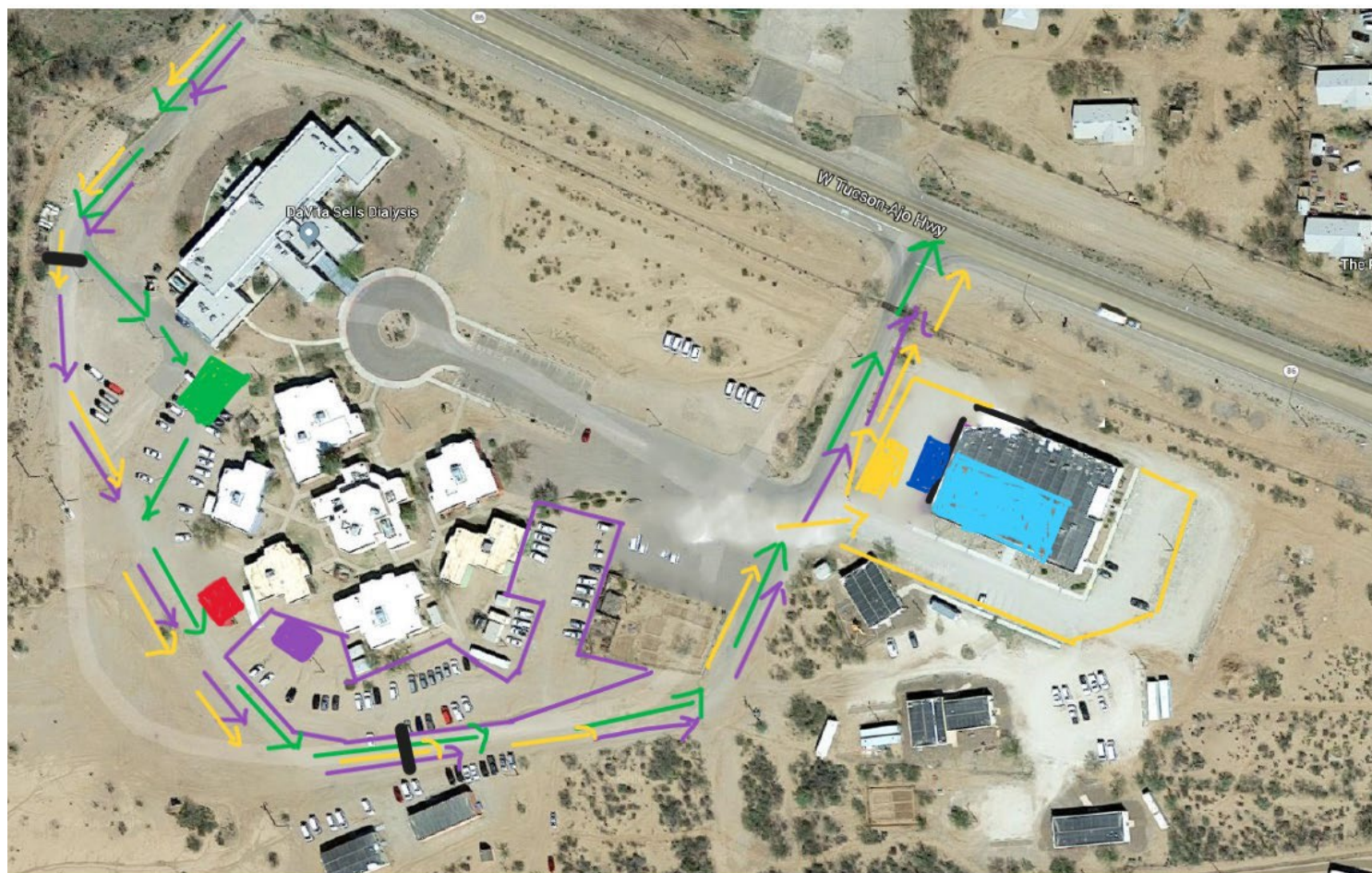
Check-in (red) and the Shuttle stop (green) will be at the Management of Health (MOH) complex behind DaVita Kidney Care and Dialysis. The shuttle will be running to take those who park (purple) at MOH to the line-up. **Entries not in line at 8:30 AM when CHECK-IN closes**, will not be allowed to participate. Entries will not be allowed to join the parade along the parade route unless instructed by parade officials.

There are designated parking places in the MOH complex designated on the map (purple). Parade Check-In staff (red) will be on-site to help direct you to parking and to the shuttle stop (green).

You will enter the MOH complex on the west side (yellow) from HWY 86. The Shuttle will be running one-way from west to east (From the back of Dialysis to the Shrek building). You cannot enter on the east (Shrek building) side. Pass the eastern entrance and go one to the western entrance (yellow) and pull in and around. You can pull up to the Check-In station (red) and then park (purple) and walk to the Shuttle (green). The walk from your parking spot to the shuttle stop can be considerable.



- If anyone in your party requires accessibility services (ride) from your car's parking space (purple) to the shuttle stop (green) please indicate here \_\_\_\_\_.



- Please indicate if anyone parking at MOH and taking the shuttle to the line-up will need **accessibility services** to get from your parked car to the shuttle stop.

---