

**Tohono O'odham Nation**  
87<sup>th</sup> Annual O'odham Wapkial Ha-Tas Rodeo & Fair  
"Generations of Music: A Celebration of Music"  
**Saturday, February 7, 2026**

**2025 PARADE ENTRY REGISTRATION**

Application DEADLINE\* IS 5:00 P.M., MONDAY, FEBRUARY 2, 2026

\*Late applications will check in and can ride, but will not be judged

**"REGISTRATIONS WILL NOT BE ACCEPTED ON THE DAY OF THE PARADE."**

PARADE ENTRY\* NAME: \_\_\_\_\_

ADDRESS: \_\_\_\_\_ CITY: \_\_\_\_\_ STATE/ ZIP: \_\_\_\_\_

ENTRY GROUP REPRESENTATIVE: \_\_\_\_\_ PHONE: \_\_\_\_\_

EMAIL: \_\_\_\_\_ Preferred Method of Contact? PHONE: ☐ EMAIL: ☐

ENTRY CATEGORY (Please check one that best describes your entry):

- ☐ Business (i.e., Bashas', Stores, Restaurants, Shops, etc.)  
☐ Groups (i.e., Car/Motorcycle, Cheer Clubs, Churches, LGBT, Modern, Traditional, Spiritual, etc.)  
☐ Schools (i.e., Clubs, Teams, Bands, Faculty, Staff, etc.)  
☐ Music (Waila Bands, Choirs, Dance Groups, Traditional Dancers/Singers, etc.)  
☐ Tribal Programs (Tribal/District Programs, Elder Centers, Enterprises, Health Care, Livestock, etc.)  
☐ Royalty (All Tribes) Horseback: ☐ Vehicle: ☐ Walking: ☐  
☐ Elected Official

**MODE OF TRANSPORTATION:**

- ☐ Marching/Walking/Dancers ☐ Car ☐ Truck ☐ Truck w/trailer  
☐ Horses (# of horses \_\_\_\_ ) ☐ Horse(s) drawn entry (# of horses \_\_\_\_ ) ☐ Supplied by Nation  
☐ Vehicles w/Marchers Walkers/Dancers ☐ Heavy Equipment

MARCHERS, WALKERS, and DANCERS if you indicated vehicle with marchers/walkers/dancers above, please indicate the number of marchers and/or walkers with your vehicle \_\_\_\_\_.

**LENGTH OF ENTRY (in feet)** \_\_\_\_\_. Please measure from the front of the float to the end of the float. If more than one vehicle will be in the parade. Measure from first car to last car.

**WILL THERE BE ANY LOUD MUSIC FROM YOUR ENTRY THAT MAY ALARM HORSES?**

IF YES, PLEASE DESCRIBE: \_\_\_\_\_

HORSE / ANIMAL ENTRIES- - MUST PROVIDE OWN POOPER SCOOPER FOR YOUR ENTRY.

\*\*Motorized entries must attach copies of vehicle insurance and valid driver's license\*\*

**ENTRY PROFILE** – in no more than 60 words, provide a description of your \*PARADE ENTRY. Tell us about your \*PARADE ENTRY. This information will be used by the announcers as your entry passes their respective stations. **This can be submitted via email (RFParade@tonation-nsn.gov) using \*PARADE ENTRY NAME.**

*By submitting the signed Parade Application, I understand I am representing all individuals participating within this parade entry that I/we have read and will adhere to Tohono O'odham Nation, O'odham Wapkial Ha-Tas Rodeo & Fair 2026 Parade Rules and Regulations. I also understand that on Parade Day, each entry must be accompanied by a Group Representative (as identified with the \*PARADE ENTRY NAME) who oversees the entry and is responsible for their participants' knowledge of and compliance with these Rules and Regulations. The designated Group Representative must be responsive to the Parade Registration Committee (RFParade@tonation-nsn.gov) requests.*

*My signature is an acknowledgement that I understand the Tohono O'odham Nation Rodeo and Fair approved disclaimer which reads as follows: Persons attending and participating in the Rodeo and Fair assume all risks including, but not limited to illness, injury, death, or property loss and agree not to hold the Tohono O'odham Nation, its agents, event sponsors and volunteers liable.*

\_\_\_\_\_  
Entry Representative's Signature

\_\_\_\_\_  
Date

Parade entries can be emailed to [RFParade@tonation-nsn.gov](mailto:RFParade@tonation-nsn.gov) or mailed to Tohono O'odham Department of Education, PO Box 837, Sells, AZ 85634. For any questions, please call 520-383-8650.

In addition, to the applicable laws of the Tohono O'odham Nation, the following parade rules and regulations are added to make the parade an enjoyable event for all participants and spectators.

## **RULES AND REGULATION**

### ➤ **GENERAL**

- Our primary focus is the safety of our spectators, entrants, and livestock. THESE RULES APPLY TO ALL ENTRIES. Parade Registration Committee reserves the right to remove any entry at any time, whether as a result of safety concerns, interference with the Parade's progress or any other reason that the Parade Registration Committee officials deem appropriate.
  - Age Requirements
    - The following requirements must be verified by the ENTRY GROUP REPRESENTATIVE, who will ensure compliance:
    - Each mounted child (regardless of age) must be accompanied by a parent or adult as designated by the parent, who either walks or rides the route with the child.
    - Protective headgear is recommended for all participants (regardless of age).
    - The ENTRY GROUP REPRESENTATIVE will ensure adequate adult supervision of all children participating in his/her entry.
- ALL parade entries must proceed with caution when you see an emergency vehicle (Ambulance, Fire, Police, etc.) approaching. Pull over to the far right of the parade route.
- This is an alcohol & drug free event.
- The ultimate responsibility for safety lies with each PARADE ENTRY. All PARADE ENTRIES must comply with all Parade Registration Committee Rules and Regulations and comply with all government regulations and safety codes, manufacturer's recommendations and similar standards. \_\_\_\_\_Initial

### ➤ **PERSONAL SAFETY**

- Please make sure ALL entry participants are aware of the possibility of weather-related illnesses.
- All Parade entries are encouraged to bring water or replenishing fluids for participants.
- NO OBJECTS may be thrown into the crowd from ANY PERSON on/in vehicles or floats (this includes from the crowd into the street) during the parade for example: coupons, photos, promotional items, fruit, candy etc. For the safety of spectators and children, PARADE ENTRIES wishing to distribute items may walk along the parade route and hand out items but must keep up with parade pace and not disrupt other participants. Jumping on and off vehicles, floats, etc., is strictly prohibited. Failure to comply may result in exclusion from participating in future parades. This is for the safety of the public and parade participants.
- Noisemakers of any kind (loud POPPERS) are not allowed. \_\_\_\_\_Initial

### ➤ **VEHICLE**

- ALL motorized vehicles/trailer entries MUST be able to show proof of the operator's driver's license and proof of vehicle insurance upon request.
- For safety reasons, drivers of a motorized entry are NOT allowed to distribute any material during the parade, their full attention must be on the parade.
- All vehicle/float entries must ensure their vehicle's tank is full of gas. All vehicles must be able to navigate the entire Parade route and make all turns required without difficulty. It is recommended for all vehicle/float entries to have a working fire extinguisher on board.
- Float entries shall NOT be greater than 14 feet in height.
- Jumping on and off vehicles, floats, etc., is strictly prohibited.
- Entry participants are strictly prohibited from sitting on the hood or the cab of a vehicle during the parade.
- No all-terrain vehicles (ATV) in the parade. \_\_\_\_\_Initial

### ➤ **HORSES AND HORSE DRAWN ENTRIES**

- All livestock Parade entries shall exhibit proper disposition and control of all animals in the Parade environment without assistance or the use of sedatives for horses such as Ace or Be Calm.
- No participants or guests may load or unload horse-drawn equipment along the Parade route before, during or after the Parade.
  - All horse-drawn vehicle entries must be in good mechanical condition.
- You MUST have one (1) or more pooper scoopers, along with the proper tools, following your group to ensure your riders' horse droppings are picked up along the parade route.

- All entries must always treat animals humanely.

\_\_\_\_Initial

### ➤ LINE-UP

- Entries **not** in line at 8:30 AM when check-in closes, **will not be allowed to participate. Entries will not be allowed to join the parade along the parade route unless instructed by Parade Registration Committee.**
- Parade Entries must place their two parade numbers (given by registration) on the front/left side of their entry, so it is easily visible to the announcers and judges. Failure to display numbers will lead to disqualification from competition of entry being judged.
- Each Parade entry shall carry plastic trash bags for depositing all trash and other litter accumulated by their Parade participants. Trash bins will be provided at the De-Staging area to dispose of trash.
  - **ORDER OF PARADE LINE UP:**
    - a. Police Escort (Tohono O'odham Police Department)
    - b. Welcome Banner
    - c. Veterans Groups
    - d. Grand Marshall
    - e. Tohono O'odham Nation Rodeo Queen
    - f. Miss Tohono O'odham Nation
    - g. Tohono O'odham Nation Legislative
    - h. Tohono O'odham Nation Judicial Branch
    - i. Tohono O'odham Nation Executive Office: Chair & Vice-Chair
    - j. Dignitaries

\_\_\_\_Initial

### ➤ PARADE PACE

- All entries must be willing and sufficiently physically fit to maintain both the Parade pace and spacing as set by Parade Committee officials, transportation during the parade route is not available. Groups should stay at least (2) car lengths behind the entry ahead.
- To ensure the flow of the parade and to avoid backup, performances are limited to 15 seconds at each announcer's stand and 30 seconds at the judge's table.
- For the safety of spectators and children, parade participants wishing to distribute items may walk along the parade route and hand out items but must keep up with parade pace and not disrupt other participants.

\_\_\_\_Initial

### ➤ CHECK IN and ROUTE MAP:

1. Parade **CHECK IN** will be at the CHECK IN booth with LINE UP on BIG FIELDS ROAD. starting at 4:30am.
2. You must know your **PARADE ENTRY** name to check in.
3. Each PARADE ENTRY is allotted ONE CAR (representative) to park on Big Fields Road for staging purposes. This is on the map as REPRESENTATIVE PARKING.
4. All entries MUST stay in their assigned 'staging' space until notified by The LINE UP COMMITTEE officials on site.
5. Parade will begin promptly at 9am - RAIN, WIND or SUNSHINE.
6. LINE UP begins at the last house on Big Fields Road. You will be guided by the LINE UP COMMITTEE officials on site.

Route begins on Main Street then turns east continuing down Main Street until the route reaches St. Mary's Church. DE-STAGING is at St. Mary's Church, and each entry is allotted up to 35 minutes to de-stage their float. All riders and walkers will be transported by SHUTTLE from St. Mary's parking lot area to Management of Health if your car is parked in the PARTICIPANT PARKING area. If you are the ENTRY REPRESENTATIVE and parked on Big Fields Road, you will SHUTTLE to Management of Health and then Shuttle from there to Big Fields Road to REPRESENTATIVE PARKING.

\_\_\_\_Initial

### ➤ ABUSE

- The O'odham Wapkial Ha-Tas Parade Committee has a ZERO TOLERANCE for animal abuse. Persons abusing animals shall immediately be removed from the route and be reported to the authorities. All livestock shall be in good health and sound condition.
- The O'odham Wapkial Ha-Tas Parade Committee has a ZERO TOLERANCE for those choosing to abuse our volunteers or our entrants. Please promptly report violators to PARADE

REGISTRATION COMMITTEE officials on the route or afterwards via email [RFPParade@tonation-nsn.gov](mailto:RFPParade@tonation-nsn.gov) or phone 520-383-8650.

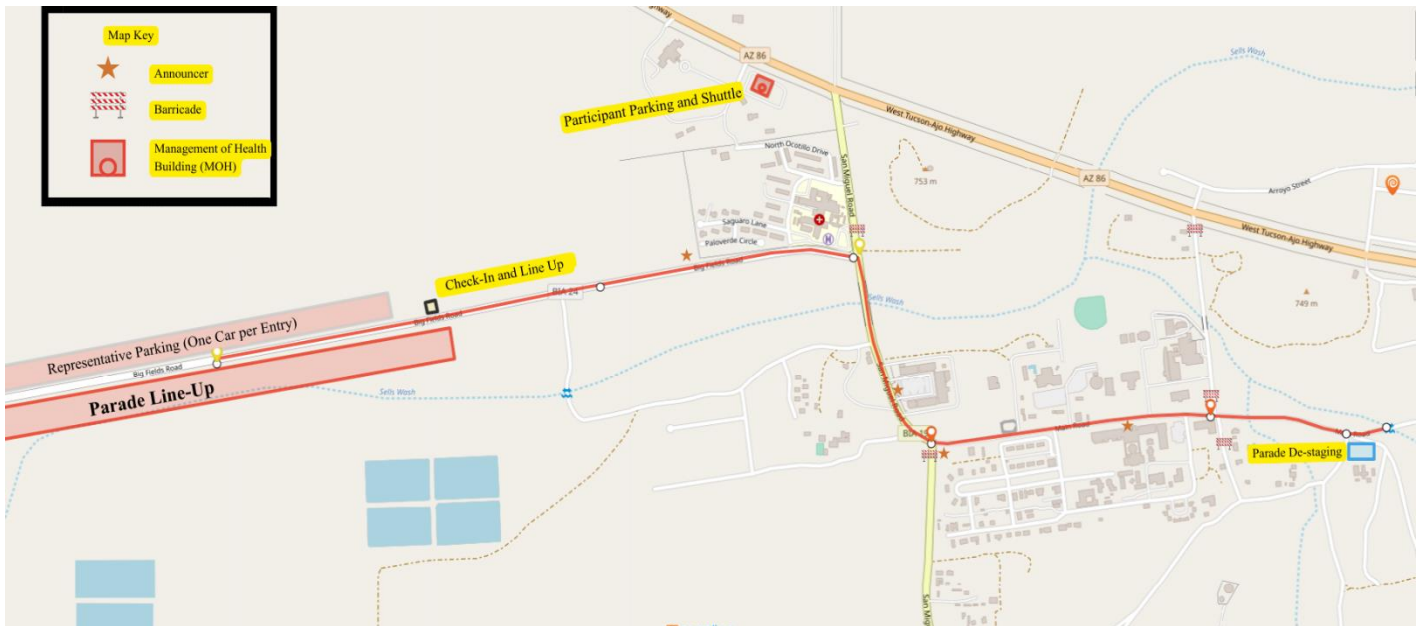
\_\_\_\_\_ Initial

### ➤ RESTRICTIONS

- The use of alcoholic beverages by participants in any capacity in the O'odham Wapkial Ha-Tas Parade is prohibited.
- All-terrain vehicles (ATV) will not be allowed to participate in the parade. \_\_\_\_\_ Initial
- 

### ➤ RULES AND ENFORCEMENT

- The Parade Rules and Guidelines above are subject to the interpretation of the PARADE REGISTRATION COMMITTEE OFFICIALS, LINE UP COMMITTEE OFFICIALS, and TRAFFIC CONTROL COMMITTEE OFFICIALS and will be enforced by Parade Staff. \_\_\_\_\_ Initial

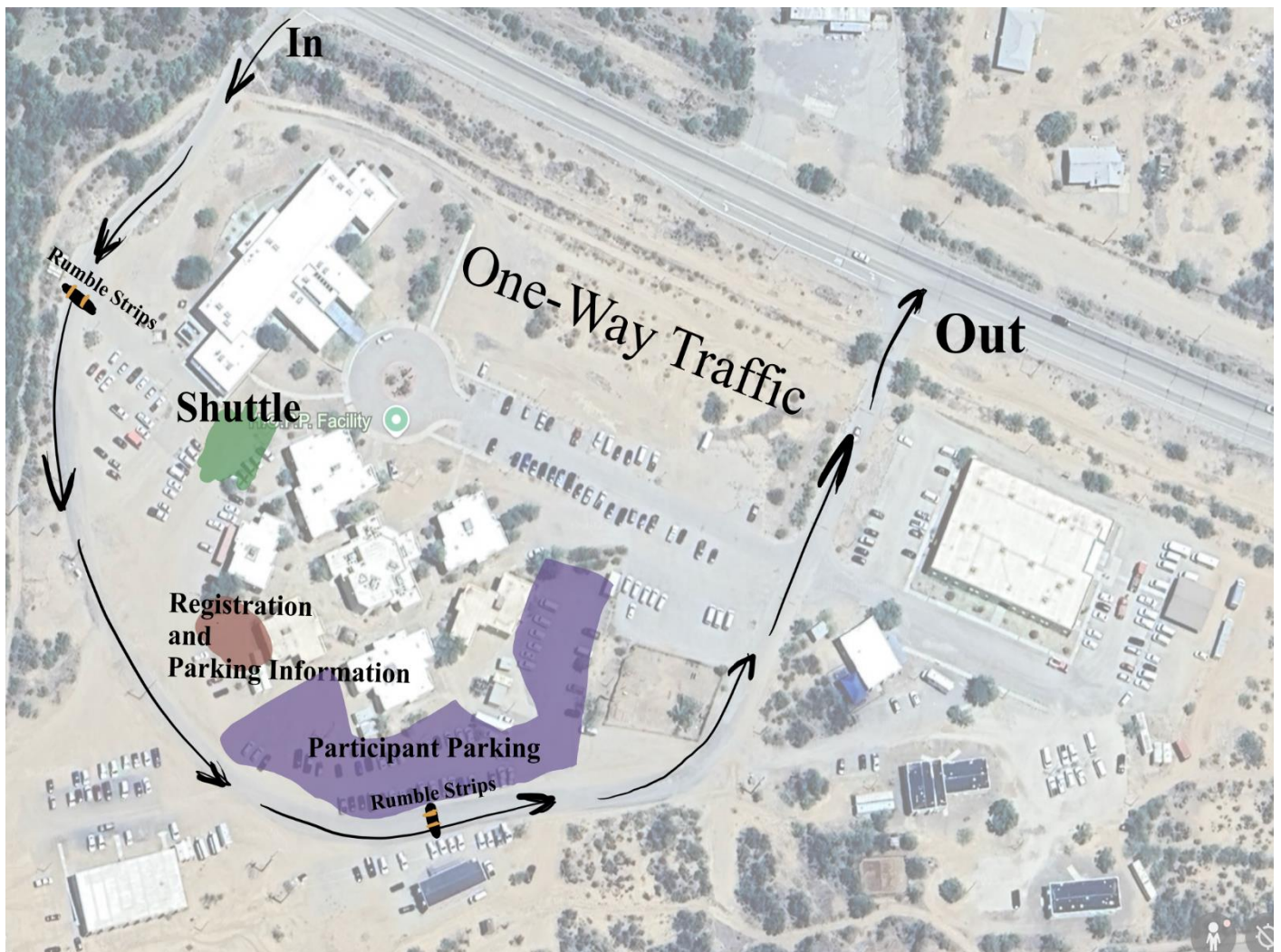


### ➤ Participant Parking and Shuttle (map below)

- There are designated parking places in the Management of Health complex on the map below (purple). Parade Parking and Registration Information staff (red) will be on-site to help direct you to parking and to the shuttle stop (green).
- You will enter the MOH complex on the west side (yellow) from HWY 86. The Shuttle will be running one-way from west to east (From the back of Dialysis to the Shrek building). You cannot enter on the east (Shrek building) side. Pass the eastern entrance and go one to the western entrance (yellow) and pull in and around. You can pull up to the Check-In station (red) and then park (purple) and walk to the Shuttle (green). Entries not in line at 8:30 AM when CHECK-IN (on Big Fields Road) closes will not be allowed to participate. Entries will not be allowed to join the parade along the parade route unless instructed by LINE UP COMMITTEE OFFICIALS on site.

The walk from your parking spot to the shuttle stop can be considerable. **If anyone in your party requires accessibility services (ride) from your car's parking space (purple) to the shuttle stop (green) please indicate here (Y or N) \_\_\_\_\_ .**





ALL COMMUNICATIONS, CHECK INS, AND COMPLIANCE DEPEND ON THE PARADE REPRESENTATIVE LETING ALL IN THEIR ENTRY KNOW THE \*PARADE ENTRY NAME. ANYONE CAN INQUIRE ABOUT RULES AND REGULATIONS FOR SPECIFIC ENTRIES BY IDENTIFYING THEMSELVES VIA THE \*PARADE ENTRY NAME.

# 87<sup>TH</sup>

## ANNUAL

### TOHONO O'ODHAM NATION RODEO & FAIR

## Tohono O'odham Nation Rodeo and Fair

## O'ODHAM WAPKIAL HA-TAS

## FEBRUARY

## 6, 7, 8, 2026

All Indian Jr Rodeo  
 All Indian Master's Rodeo  
 All Indian Women's Rodeo  
 All Indian Rodeo  
 All Indian Wild Horse Race  
 Exceptional Rodeo  
 Apedag Employee Rodeo

Miss Tohono O'odham Nation  
 Rodeo Queen Pageant  
 – January 18, 2026

Miss Tohono O'odham Nation  
 Pageant, January 19, 2026

Arts & Crafts Vendors  
 Basketball Tournaments  
 Business Expo  
 Carnival  
 Community Day  
 Entertainment  
 Fashion Show  
 Food Vendors  
 Fun Run/Walk  
 Informational Booths  
 Parade  
 Pow Wow  
 Traditional Dances  
 Toka Tournaments  
 Waila Contest  
 Ha'a Race  
 Men's Traditional Games

And Much more

Parade theme: **GENERATIONS OF MUSIC: A Celebration of Music**

By attending the Tohono O'odham Nation 87<sup>th</sup> Annual Wapkiial Ha-Tas, attendees and participants acknowledge and accept all risks associated with attendance and participation, including but not limited to illness, injury, death or property loss. Attendees and participants agree to release the Tohono O'odham Nation, its departments, programs, agents, sponsors and volunteers from liability, including all legal actions arising out of, or related to, any injury, including death, which may be sustained by the attendee or participant, or loss or damage to any property in their possession or control, while in, on, or upon the premises. All attendees and participants are reminded that the premises are alcohol and drug free.