



TOHONO O'ODHAM NATION

DEPARTMENT OF HEALTH AND HUMAN SERVICES

P.O. BOX 810 SELLS, ARIZONA 85634



Office of the Executive Director
(520) 383-6000
Fax: (520) 383-3930

Division of:

Adult Protective Services
(520) 383-6099
FAX (520) 383-1055

Behavioral Health
(520) 383-6165
FAX: (520) 383-5433

Child Welfare Services
(520) 383-6100
FAX: (520) 383-5373

Community Health
(520) 383-6200
FAX: (520) 383-6293

Family Assistance
(520) 383-6250
FAX: (520) 383-5170

Health Care
(520) 383-7200
FAX: 383-7216

Health Promotion
(520) 383-6240
FAX: (520) 383-1091

Health Transportation
(520) 383-6050
FAX: (520) 383-6065

Senior Services
(520) 383-6075
FAX: (520) 383-8027

MEMORANDUM

TO: Lynnita Hoffman, Program Coordinator Sr.
FROM: Carlos Aceves, Public Health and Emergency Preparedness Coordinator
SUBJECT: Public Service Announcement - Parade
DATE: January 26, 2018

This is a Public Service Announcement from the Tohono O’odham Nation Department of Health and Human Services, Parade Committee and this station:

We look forward to another fun filled Rodeo and Fair Weekend! The organizers of the parade are requesting your assistance and cooperation in the following areas:

Parade Check in:

- Parade float check in will take place at the Department of Health and Human Services southwest corner of the complex. Entrance signs will be posted
- Floats and persons riding the float are to check in at this location. Once the float is checked in, drivers can proceed to the line-up location on Big Fields Rd. Volunteers will be available to assist and direct you to your line-up spot
- We request you do not drive on to Big Fields Rd. to drop off any persons riding on the float
- People riding on the float will be shuttled to the parade line up to meet their float, in order to avoid over congestion on Big Fields Rd.
- Parking will be available at the complex; shuttles will be available to transport parade participants to the line-up and at the end of the parade. Also, shuttles will be available to transport from the de-staging area at St. Mary’s Church parking lot (end of the parade).

Parade street route closure will begin at 8:30am:

- The only parking lots available after 8:30am will be the Legislative, Judicial and Executive parking lots until they get full. Entrance to these parking lots is located on PD Rd.

Parade Assigned Parking Lots: Please use the designated parking areas for public use, this will allow for people, especially children, to use the sidewalks and avoid walking in the street. This is a precaution to ensure the safety of all spectators.

Special Needs
(520) 383-6124
FAX: (520) 383-
1082

Parade parking will be made available at following locations

- First Baptist Church off of Main and Topawa Rd.
- Food Distribution parking lot located north of the Fire Station. Entrance to this parking lot is located on the north entrance of Bashas' Plaza
- Indian Oasis Elementary School parking lot located on the East side of the school.
- Legislative, Judicial and Executive parking lots: Special Needs (Handicap) parking will be located at the Legislative parking lot using an official placard only. All roads leading to the parade route will close at 8:30am. The Legislative, Judicial and Executive parking lots will be the only parking lots accessible after 8:30am when the parade route is closed off from driving traffic.
- Volunteers will be available in each parking area. Please avoid parking your vehicle on the sidewalks if you are going to park near the parade route.

Slow Down:

- Please slow down to 15 MPH or less on Big Fields Rd. line up and down the parade route, it will be dark and visibility is limited in the area
- Follow the volunteer's instructions along the parade route, they are there to assist you

Volunteers will be working in the following areas:

- Float Check-In at the Department of Health and Human Service Complex.
- Directing traffic throughout the parade.
- Assigned Parade Parking Lots.
- Assisting with the floats on the Line-up on Big Fields Rd.
- First Aid Stations.
- Setting up the barricades

We ask to you to please be patient, respectful and kind to the volunteers, they are working hard to ensure everyone enjoys a safe and fun-filled parade.

Thank you, your cooperation is greatly appreciated. You may contact Lynнита Hoffman at 383-6000 or Doris Jose at 383-6050 for additional information or questions.



TOHONO O'ODHAM NATION

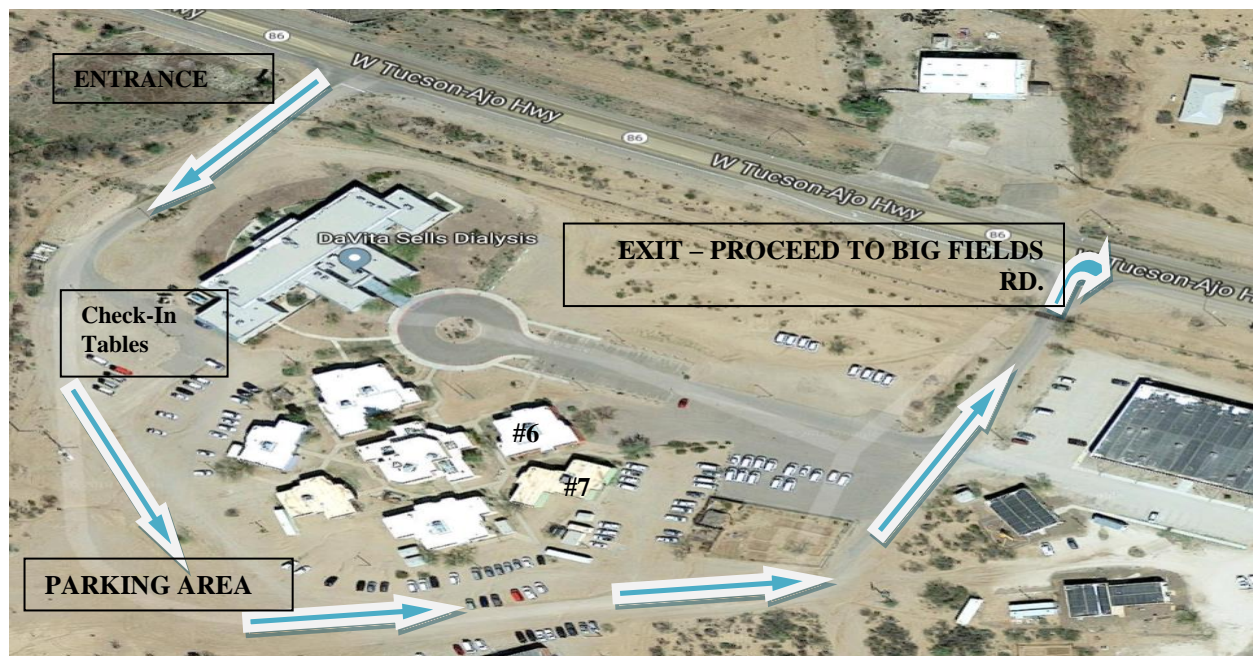
DEPARTMENT OF HEALTH AND HUMAN SERVICES

P.O. BOX 810

SELLS, ARIZONA 85634

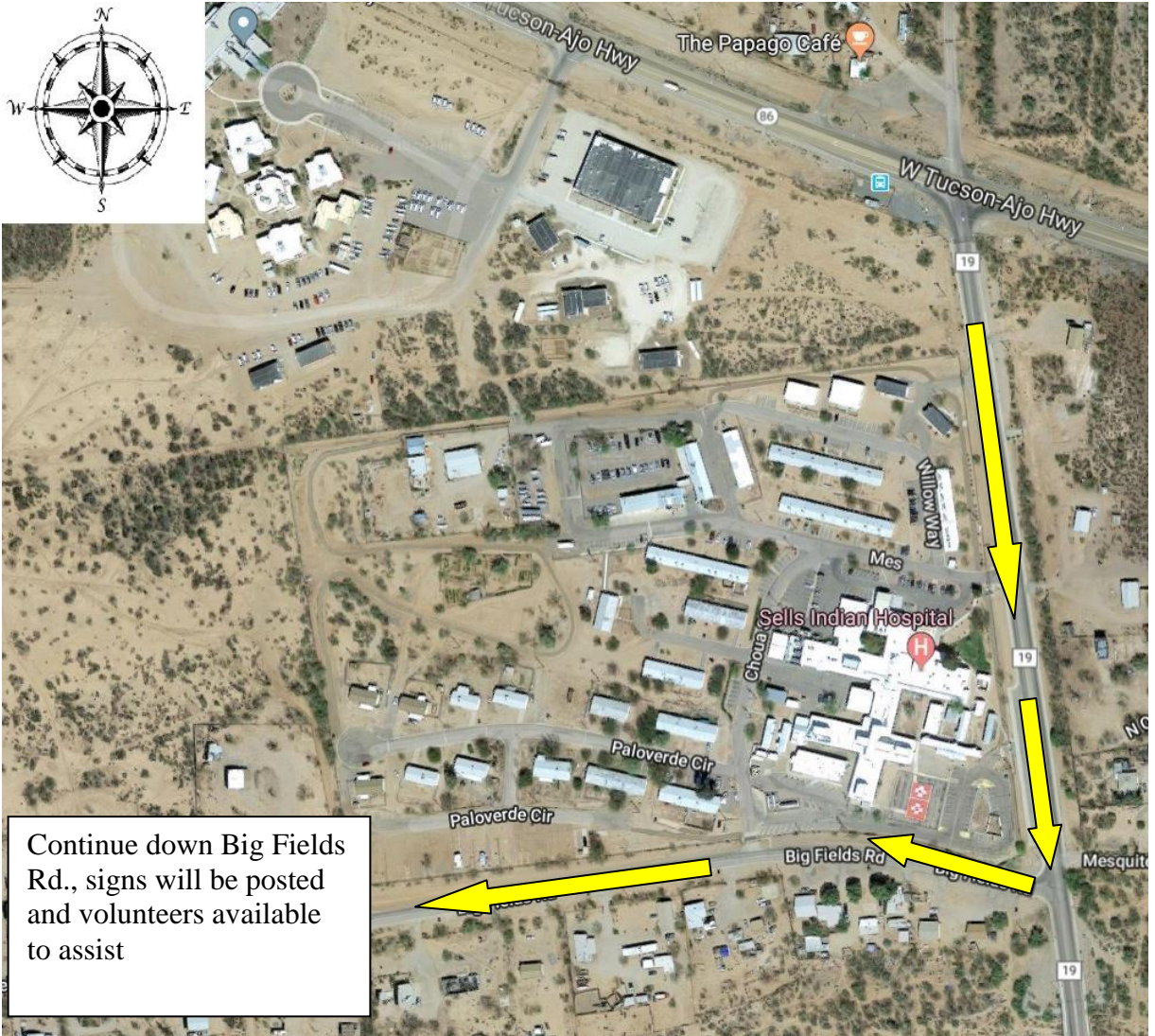


MAP – CHECK-IN/REGISTRATION:



FACILITIES AVAILABLE IN BLDG #6 & BLDG #7 (SEE MAP ABOVE)

MAP – PARADE LINE-UP



Continue down Big Fields Rd., signs will be posted and volunteers available to assist